

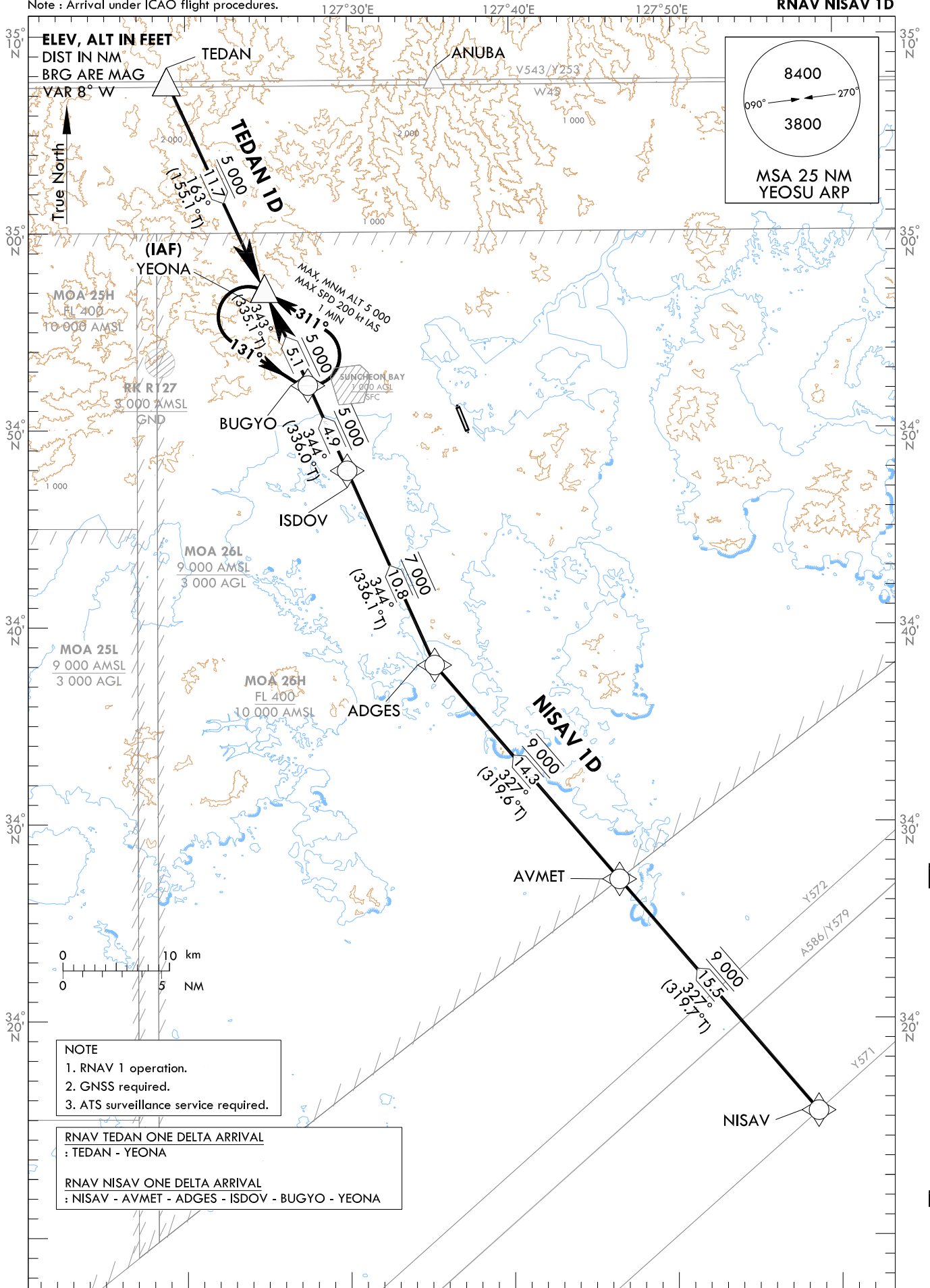
STANDARD ARRIVAL CHART  
INSTRUMENT(STAR) - ICAO

TRANSITION ALT 14 000  
TRANSITION LVL FL 140

SACHEON	APP	135.4
YEOSU	TWR	122.5
		240.9

YEOSU/Yeosu(RKJY)  
RWY 17  
RNAV TEDAN 1D  
RNAV NISAV 1D

Note : Arrival under ICAO flight procedures.



NOTE  
1. RNAV 1 operation.  
2. GNSS required.  
3. ATS surveillance service required.

RNAV TEDAN ONE DELTA ARRIVAL  
: TEDAN - YEONA

RNAV NISAV ONE DELTA ARRIVAL  
: NISAV - AVMET - ADGES - ISDOV - BUGYO - YEONA

Change : Information of fix name(AMENT → AVMET).

YEOSU/Yeosu(RKJY)  
RWY 17  
RNAV TEDAN 1D, RNAV NISAV 1D  
HOLDING PROCEDURE

AERONAUTICAL DATA TABULATION

Standard Instrument Arrival Procedure Coding Tables

RNAV TEDAN 1D

Serial Number	Path Descriptor	Waypoint Identifier	Fly-over	Course/Track °M(°T)	Distance (NM)	Turn direction	Altitude (ft)	Speed (kt)	Coordinates	VPA/RDH	Navigation specification	Remarks
001	IF	TEDAN	-	-	-	-	-	-	35°07'43.8"N 127°18'52.1"E	-	RNAV 1	-
002	TF	YEONA	-	163(155.1)	11.7	-	+5 000	-	34°57'03.8"N 127°24'52.1"E	-	RNAV 1	IAF

RNAV NISAV 1D

Serial Number	Path Descriptor	Waypoint Identifier	Fly-over	Course/Track °M(°T)	Distance (NM)	Turn direction	Altitude (ft)	Speed (kt)	Coordinates	VPA/RDH	Navigation specification	Remarks
001	IF	NISAV	-	-	-	-	-	-	34°15'19.1"N 127°58'35.0"E	-	RNAV 1	-
002	TF	AVMET	-	327(319.7)	15.5	-	@9 000	-	34°27'07.6"N 127°46'29.4"E	-	RNAV 1	-
003	TF	ADGES	-	327(319.6)	14.3	-	@9 000	-	34°38'03.0"N 127°35'14.0"E	-	RNAV 1	-
004	TF	ISDOV	-	344(336.1)	10.8	-	@7 000	-	34°47'56.0"N 127°29'55.0"E	-	RNAV 1	-
005	TF	BUGYO	-	344(336.0)	4.9	-	@5 000	-	34°52'26.0"N 127°27'29.0"E	-	RNAV 1	-
006	TF	YEONA	-	343(335.1)	5.1	-	+5 000	-	34°57'03.8"N 127°24'52.1"E	-	RNAV 1	IAF

HOLDING PROCEDURE

Holding Identification	Path Descriptor	Waypoint Identifier	Fly-over	Course/Track °M(°T)	Time (min)	Turn direction	Altitude (ft)	Speed (kt)	Coordinates	VPA/RDH	Navigation specification	Remarks
RNAV TEDAN 1D	HM	YEONA	Y	311(302.6)	1	L	@5 000	-200	34°57'03.8"N 127°24'52.1"E	-	RNAV 1	-
RNAV NISAV 1D	HM	YEONA	Y	311(302.6)	1	L	@5 000	-200	34°57'03.8"N 127°24'52.1"E	-	RNAV 1	-

Change : Information of fix name(AMENT → AVMET).

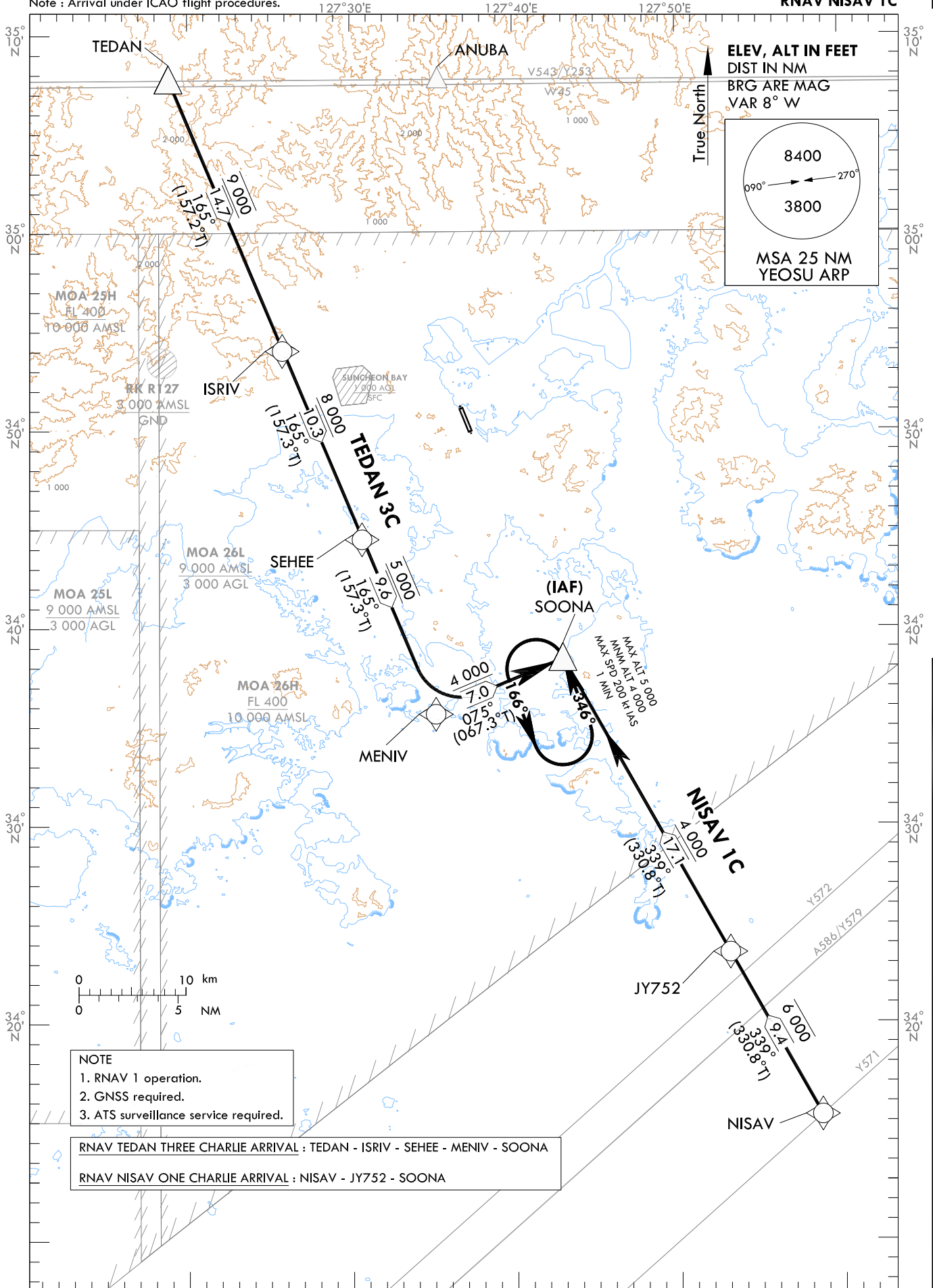
STANDARD ARRIVAL CHART  
INSTRUMENT(STAR) - ICAO

TRANSITION ALT 14 000  
TRANSITION LVL FL 140

SACHEON APP 135.4  
YEOSU TWR 122.5  
240.9

YEOSU/Yeosu(RKJY)  
RWY 35  
RNAV TEDAN 3C  
RNAV NISAV 1C

Note : Arrival under ICAO flight procedures.



NOTE  
1. RNAV 1 operation.  
2. GNSS required.  
3. ATS surveillance service required.

RNAV TEDAN THREE CHARLIE ARRIVAL : TEDAN - ISRIV - SEHEE - MENIV - SOONA  
RNAV NISAV ONE CHARLIE ARRIVAL : NISAV - JY752 - SOONA

Change : Information of standard instrument arrival procedure for RWY 35(RNAV GOSBO 5C → RNAV NISAV 1C).

YEOSU/Yeosu(RKJY)  
RWY 35

RNAV TEDAN 3C, RNAV NISAV 1C  
HOLDING PROCEDURE

AERONAUTICAL DATA TABULATION

Standard Instrument Arrival Procedure Coding Tables

RNAV TEDAN 3C												
Serial Number	Path Descriptor	Waypoint Identifier	Fly-over	Course/Track °M(T)	Distance (NM)	Turn direction	Altitude (ft)	Speed (kt)	Coordinates	VPA/RDH	Navigation specification	Remarks
001	IF	TEDAN	-	-	-	-	-	-	35°07'43.8"N 127°18'52.1"E	-	RNAV 1	-
002	TF	ISRIV	-	165(157.2)	14.7	-	@9 000	-	34°54'10.0"N 127°25'48.0"E	-	RNAV 1	-
003	TF	SEHEE	-	165(157.3)	10.3	-	+8 000	-	34°44'37.0"N 127°30'39.0"E	-	RNAV 1	-
004	TF	MENIV	-	165(157.3)	9.6	-	@5 000	-	34°35'46.2"N 127°35'07.9"E	-	RNAV 1	-
005	TF	SOONA	-	075(067.3)	7.0	-	+4 000	-	34°38'27.5"N 127°42'56.0"E	-	RNAV 1	IAF

RNAV NISAV 1C												
Serial Number	Path Descriptor	Waypoint Identifier	Fly-over	Course/Track °M(T)	Distance (NM)	Turn direction	Altitude (ft)	Speed (kt)	Coordinates	VPA/RDH	Navigation specification	Remarks
001	IF	NISAV	-	-	-	-	-	-	34°15'19.1"N 127°58'35.0"E	-	RNAV 1	-
002	TF	JY752	-	339(330.8)	9.4	-	-6 000	-	34°23'33.2"N 127°53'02.0"E	-	RNAV 1	-
003	TF	SOONA	-	339(330.8)	17.1	-	+4 000	-	34°38'27.5"N 127°42'56.0"E	-	RNAV 1	IAF

HOLDING PROCEDURE												
Holding Identification	Path Descriptor	Waypoint Identifier	Fly-over	Course/Track °M(T)	Distance (NM)	Turn direction	Altitude (ft)	Speed (kt)	Coordinates	VPA/RDH	Navigation specification	Remarks
RNAV TEDAN 3C	HM	SOONA	Y	346(338.5)	1	L	-4 000 +5 000	-200	34°38'27.5"N 127°42'56.0"E	-	RNAV 1	-
RNAV NISAV 1C	HM	SOONA	Y	346(338.5)	1	L	-4 000 +5 000	-200	34°38'27.5"N 127°42'56.0"E	-	RNAV 1	-

Change : Information of standard instrument arrival procedure for RWY 35(RNAV GOSBO 5C → RNAV NISAV 1C).